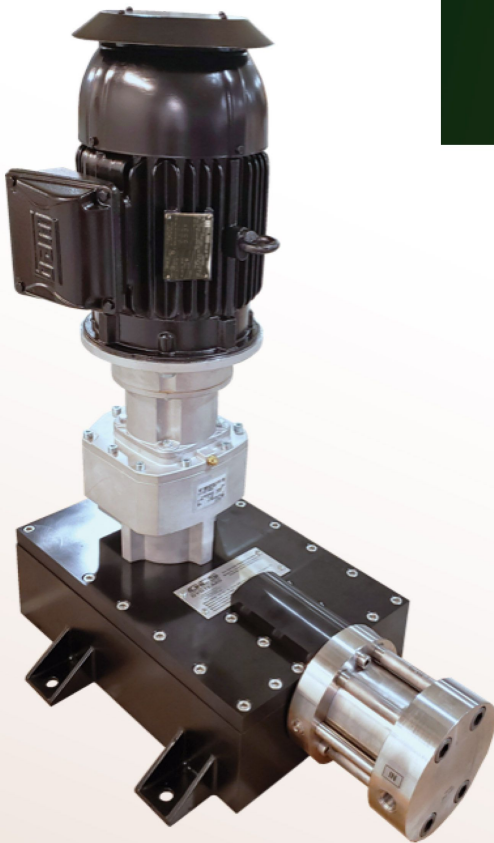
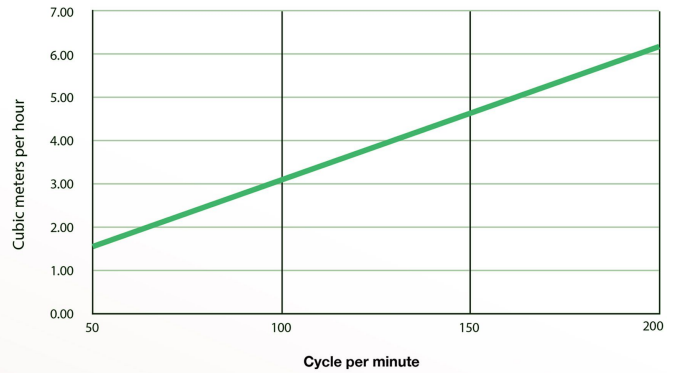


TYPE EMB Series 160 Bar Dry Gas Seal Pressure Boosters



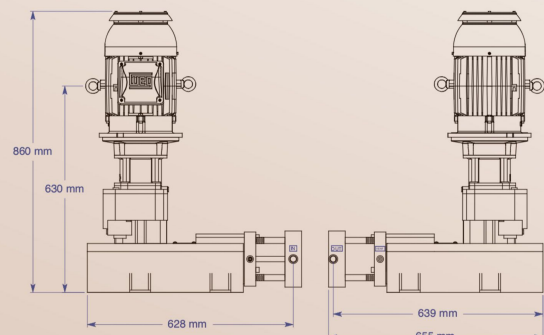
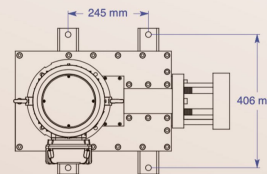
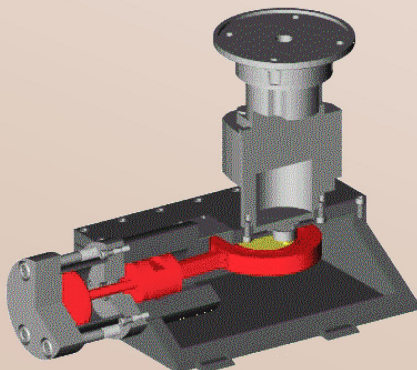
Displacement Flowrate in cubic meters per hour



MODEL SPECIFICATIONS

Designed in accordance with the ASME Boiler and Pressure Vessel Code Section VIII, Div. 1 (not stamped). The gas wetted components comply with NACE MR0175/ISO15156-2 and MR0103-2010. The motor hazardous area specification is NEMA Class I, Div. 2, Groups C & D.

Maximum Gas Discharge Pressure	16 MPa
Maximum Gas Discharge Temperature	200 °C
Maximum Pressure Boost	500 KPa
Variable Speed Motor Maximum Power	4 kw
Motor Voltage / Frequency	380V / 50Hz
Booster Cycle Rate	750194 cpm
Maximum gas displacement flowrate	6 m3/hr
Weight	~111 kg
Inlet/Discharge Ports	1/2 NPT
Gas Wetted Booster Components	316L SS



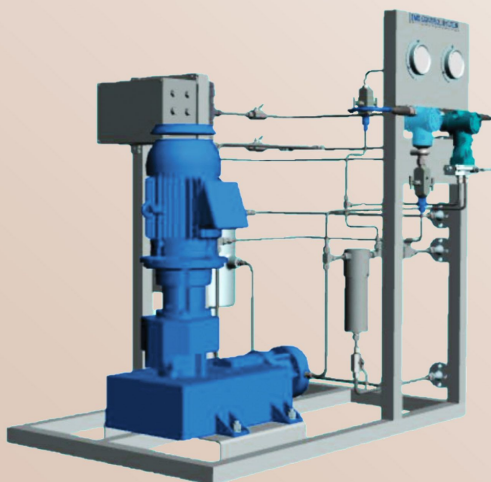
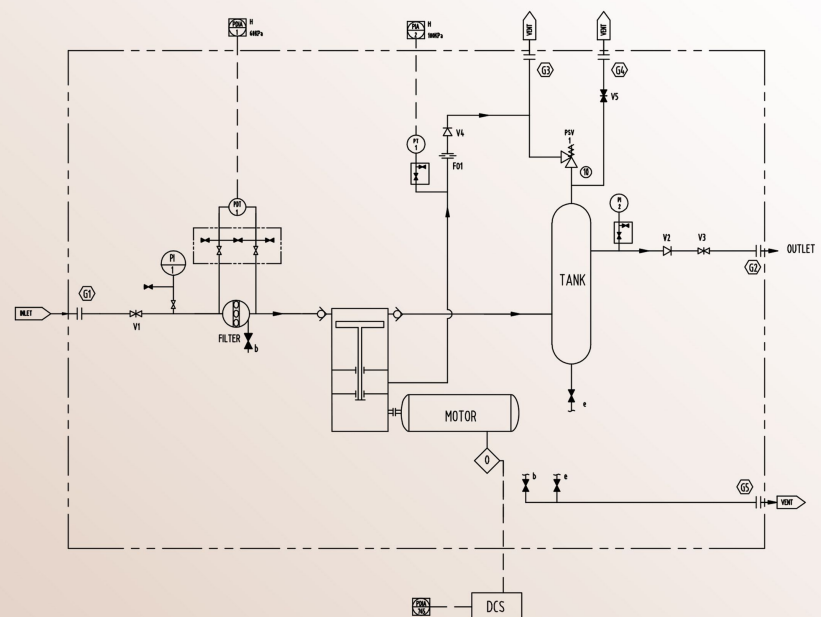
Booster can be secured with M16 or 5/8" screws

Booster Comparison Table

	EMB	CENTRIFUGAL REGENERATIVE TURBINE	Air-Driven Booster
Minimum Cost	X	2.5 X	0.5 X
Drive	Electric motor	Electric motor	Pneumatic cylinder
Pressure booster	Reciprocating piston	Regenerative turbine	Reciprocating piston
Displacement flow	Unaffected by supply pressure	Inadequate at low supply pressure	Unaffected by supply pressure
High pressure design	Simple and economical	Difficult and expensive	Simple and economical
Flowrate control	Simple	Simple	Difficult
Energy Efficiency	Above 90%	Below 20%	Below 30%
24/7 operation	Yes	Yes	Yes
Typical boost pressure	High if required	Low to adequate	High if required
Gas temperature increase	Negligible	Substantial	Negligible
Instrument air requirement	No	No	Yes
Lubrication requirement	No	No	No
Maintenance interval	5,000-9000 hours	17,000 hours	4,000-6000 hours
Field repairable	Yes	No	Yes
Difficulty of repair	Low	High	Medium
Cost of repair	Low	Very high	Low
Rod seal leakage	< 20 ml/min	None	< 50 ml/min
Weight	Medium	High	Low
Size	Large	Large	Small
Noise	Low	Low	High



P & ID



Fluid Science Dynamics (S) Pte Ltd

1 Commonwealth Lane
#09-29 One Commonwealth
Singapore 149544
Tel +65 6659 2282

- Singapore
- Indonesia
- Malaysia
- China
- Qatar
- UAE
- Pakistan
- Canada
- Netherlands



Fluid Science Dynamics (S) Pte Ltd

1 Commonwealth Lane
#09-29 One Commonwealth
Singapore 149544
Tel +65 6659 2282
Phone: +65 9824 8889
Email: lauwei@fluidscdynamics.com

NEBOT Fluid Science Dynamics (Tianjin) Co., Ltd

Tianjin Xiqing Xuefu Industrial Park, Huishen road
No.7, Unit No J5, Factory A102, Tianjin City, China.
Phone: +86 22 887 18208
Email: wanghaining@tjnebot.com

PT. Fluid Science Dynamics Indonesia

Berlian 88 Biz Estate, Block C No. 12
Kel. Bojong Nangka, Kec. Kelapa Dua, Tangerang
15820, Banten, INDONESIA
Phone : +62 811825718
Email: rudiyanto.wijaya@fsd.co.id

Fluid Science Dynamics (M) Sdn Bhd

No.13, Lorong Sungai Puloh, 1A/KU6 Taman
Teknologi gemilang, Kawasan Perindustrian
Sungai Puloh, 42100 Klang, Selangor, Malaysia
Phone : +603 3345 1188
Email: lauwei@fluidscdynamics.com