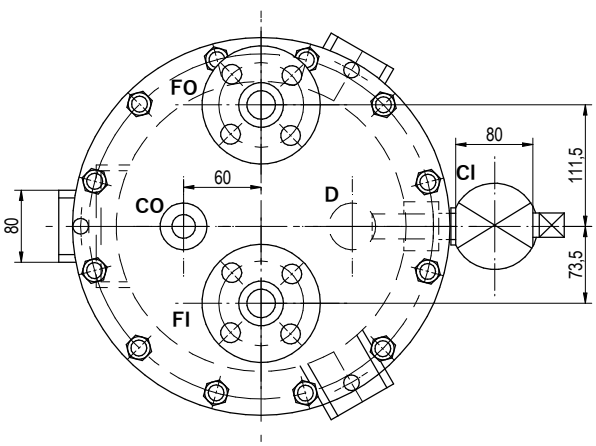


MODIFICATION :

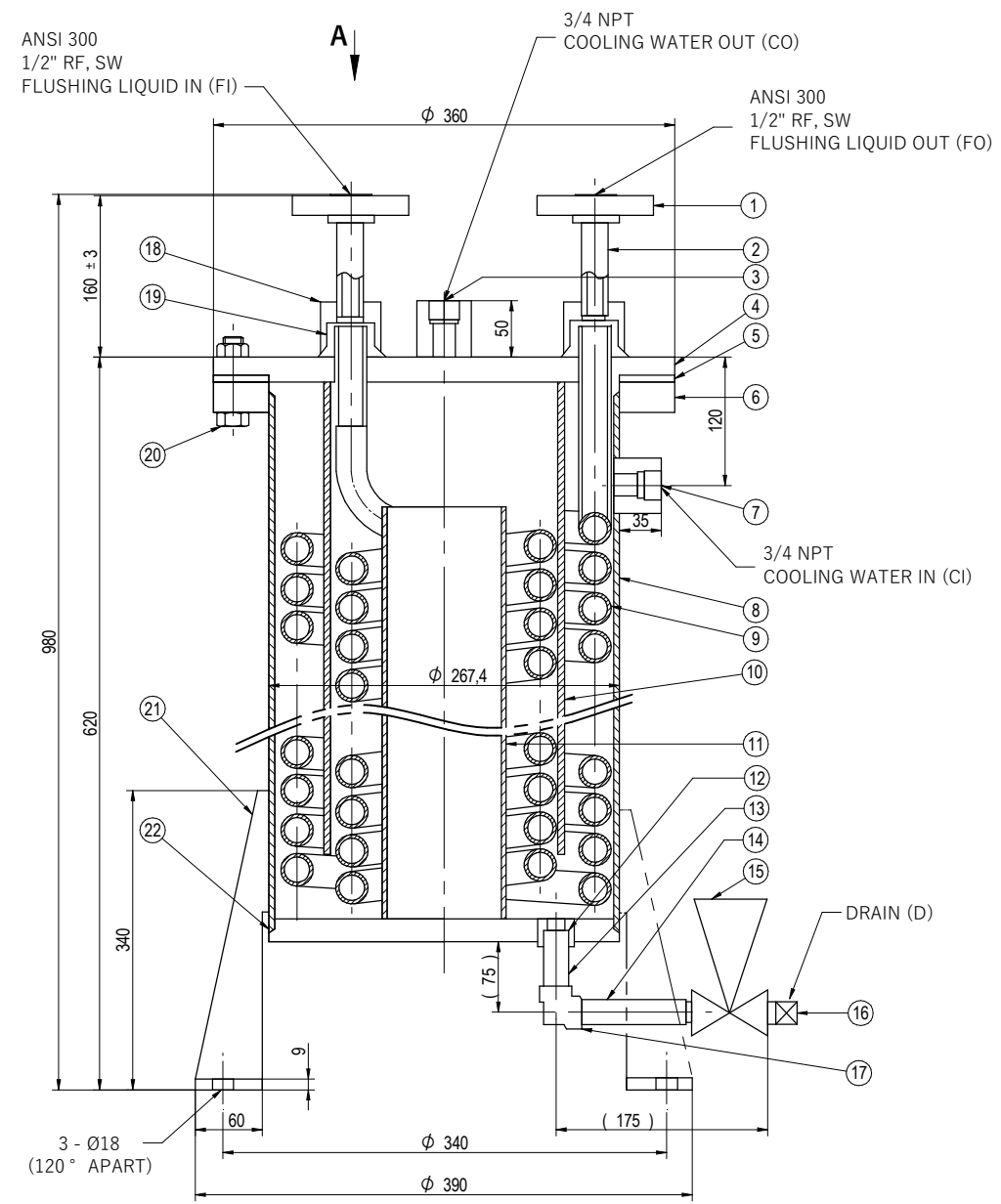
ORIGINAL ISSUED "A"

DWG NO.:

F-ST004



VIEW FROM A



proposal drawing
 *not to be released
 for order processing
 before customer
 approval
customer approval
 sign :
 name :
 date :

22	END PLATE	SS 400	1	
21	SET PLATE	SS 400	3	
20	BOLT & NUT	SCM435&S45CH	12	M16
19	SOCKET	SUS 304	1	
18	SOCKET	SUS 304	2	
17	ELBOW	SUSF 304	2	SW1/2 x SW1/2
16	PLUG	SUS 304	1	1/2 NPT
15	GATE VALVE	SF 45A	1	1/2NPT x 1/2NPT 150LB
14	PIPE	SUS 316TP	1	SW1/2 x 1/2NPT SCH80
13	PIPE	SUS 316TP	1	SW1/2 x SW1/2 SCH80
12	SOCKET	SS 400	1	
11	BAFFLE	CARBON STEEL	1	4B
10	BAFFLE	CARBON STEEL	1	7B
9	TUBE	SUS 304TP	1	1/2B x SCH40
8	SHELL	CARBON STEEL	1	10B
7	SOCKET	SS 400	1	3/4 NPT
6	FLANGE	SS 400	1	
5	GASKET	NON ASBESTOS	1	
4	FLANGE	SS 400	1	
3	SOCKET	SS 400	1	3/4 NPT
2	PIPE	SUS 316TP	2	1/2B SCH80
1	FLANGE	SUSF 316	2	ANSI 300# 1/2" RF, SW
NO	DESCRIPTION	MATERIAL	QTY	REMARK

EQUIPMENT TYPE : REBOILER CIRCULATION PUMP
 PROJECT NO :
 MODEL / SIZE : 250x150 UCWM-70
 PLANT ITEM NO : VD-P0108A/B
 INSTALLED AT : PUMP HGS

DESIGN DATA		TUBE SIDE	SHELL SIDE
LIQUID		VACUUM COLUMN BOTTOM	WATER
PRESS.		7.1 kgf/cm ² G	5 kgf/cm ² G
TEMP.	IN	340° C	35° C
	OUT	80° C	44° C
FLOW RATE		4 liter / min	55 liter / min
DESIGN PRESS.		28.9 kgf/cm ² G	8.5 kgf/cm ² G
TEST PRESS.		13.8 kgf/cm ² G	10 kgf/cm ² G
WEIGHT		110 kg	

TOLERANCE (MM)			WELD DETAILS ACCORDING TO ASME IX					
OVER	TO	VALUE						
0	500	±2						
500	1000	±5						
1000	-	±10						
ANGULAR		±2°						

CUSTOMER DATA	
PROJECT	PT. PATRA SK
CUSTOMER	
E.P.C	
END USER	
LOCATION	DUMAL, INDONESIA
API PLAN	21 / 52
SPECIFICATION	

NTS	SH	DD	YU	05-06-2020	PROPOSAL DRAWING	A
SCALE	BY	CHKD	APPD	DATE	DESCRIPTION	REV
TITLE :						DESIGN
FLUSHING COOLER TYPE HE-10E SIZE 1.2M ²						FSDI
FILE REFERENCE :						MM

All intellectual property rights (including but not limited to copyright and design rights whether registered or unregistered) in relation to this drawing together with the information contained in this drawing (including but not limited to know-how and confidential information) is proprietary to fluidsciencedynamics. Reproduction (whether in whole or in part) or use in any way whatsoever of this drawing or of any information contained therein is prohibited except with the prior written consent of fluidsciencedynamics. All rights in relation to this drawing are reserved.



DWG NO.:

F-ST004

SHT NO.	ISSUE
1 OF 1	A