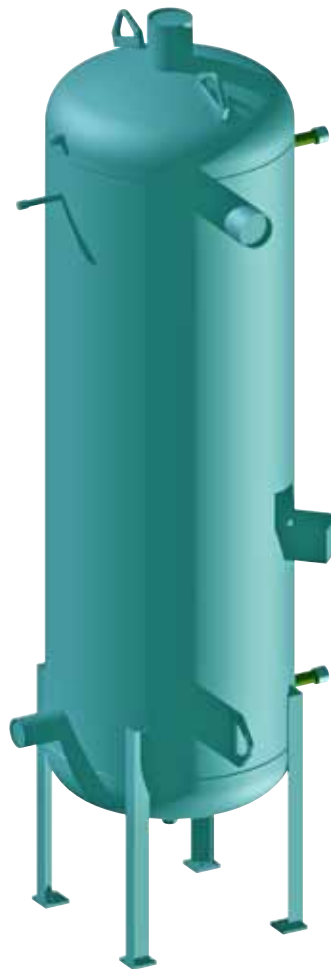


# ***VERTICAL FLASH ECONOMIZERS***



**DESCRIPTION**

Flash Economizers provide an intermediate pressure level in a refrigeration system for liquid and flash gas separation. The saturated liquid from this vessel produces less flash gas at the evaporator improving system efficiency and reduced operating cost.

**FEATURES**

- Designed, Fabricated and Certified to the ASME BPV Code and Manufacturer's Data Report registered with the National Board
- 250 psi standard design pressure (300 psi on 24 inch and smaller)
- Post weld heat treatment
- High quality, corrosion resistant, long lasting epoxy paint
- Customizable nozzle orientation, elevation and size, etc. via Coolware™
- Shipped fully sealed and pressurized with a nominal nitrogen charge to maintain cleanliness and protect internal surfaces

**Options:**

- Post weld heat treatment deduct
- Higher design pressures for nonammonia applications
- Ship loose level column with level eyes and level probe
- Dual stamping for temperature applications below -20°F
- Corrosion allowance

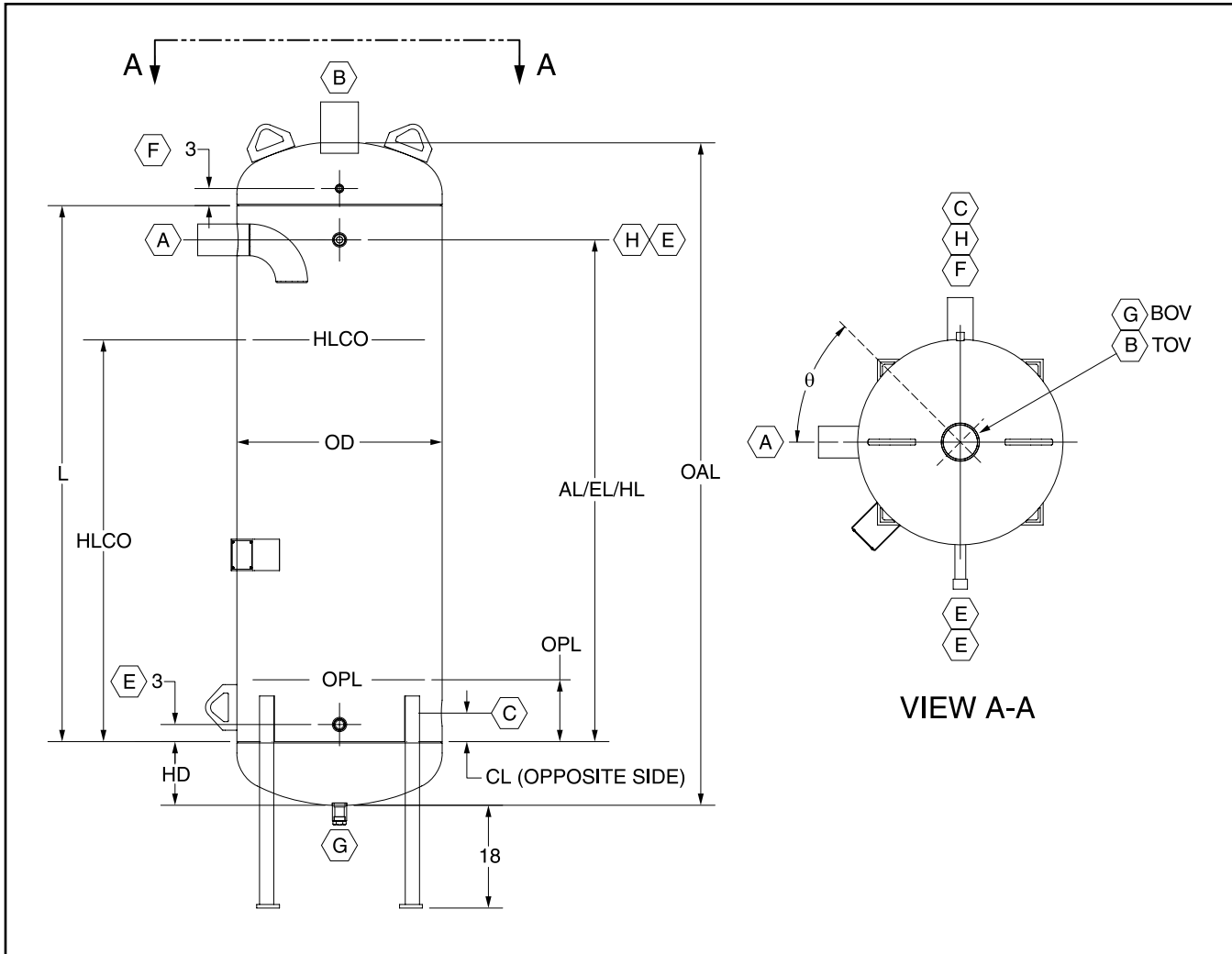
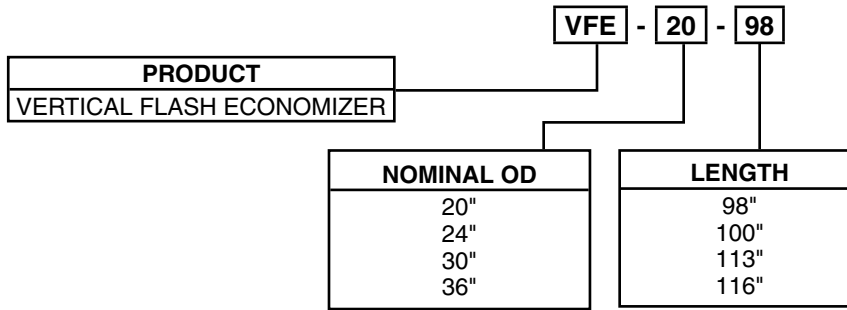


Figure 1 - Data and Dimensions

Key to Nozzle/Coupling Descriptions:			
A - Liquid Makeup	F - Relief (Coupling)	HLCO - High Level Cutout	OPL - Operating Level
B - Gas Outlet	G - Drain	L - Shell Length	
C - Liquid Outlet	H - Oil Pot Vent	OAL - Overall Length	
E - Level Column	HD - Head Depth	OD - Outside Diameter	

**NOMENCLATURE**



**VERTICAL FLASH ECONOMIZER CAPACITIES R-717 <sup>(1)</sup>**

Model Number	Operating Temperature				
	0°F	10°F	20°F	30°F	40°F
VFE-20-98	72.2	80.8	89.8	99.3	109.0
VFE-24-100	105.0	118.0	131.0	145.0	160.0
VFE-30-113	167.0	187.0	207.0	229.0	252.0
VFE-36-116	242.0	271.0	301.0	333.0	367.0

1. Capacities are given in tons of refrigeration, (R-717)
2. Capacities based on +95°F liquid feed temperature.

**DIMENSIONAL DATA**

Model Number	MAWP	OD	OAL	HD	L	Number of Legs 18"H	Uninsulated Dry Wt. (lbm)	R-717 Operating Charge (lbm)	Surge Vol. (cu-ft)	Theta θ
VFE-20-98	300	20	98 <sup>3</sup> / <sub>16</sub>	7 <sup>3</sup> / <sub>16</sub>	84	3	800	62.8	7.58	0°
VFE-24-100	300	24	100 <sup>1</sup> / <sub>4</sub>	8 <sup>3</sup> / <sub>16</sub>	84	3	1,000	98.5	11.3	0°
VFE-30-113	250	30	113 <sup>1</sup> / <sub>4</sub>	9 <sup>1</sup> / <sub>16</sub>	94	3	1,400	180.0	21.8	0°
VFE-36-116	250	36	116 <sup>3</sup> / <sub>16</sub>	11 <sup>3</sup> / <sub>16</sub>	94	4	1,700	296.4	31.6	45°

Model Number	Nozzle / Coupling NPS <sup>(3) (4) (5)</sup>							AL	CL	EL	HL	OPL	HLCO
	A	B	C	E	F	G	H						
VFE-20-98	3	4	3	1 <sup>1</sup> / <sub>4</sub>	1/2	1	3/4	74	4	74	74	11	56
VFE-24-100	4	4	3	1 <sup>1</sup> / <sub>4</sub>	1/2	1	3/4	74	4	74	74	12	58
VFE-30-113	4	5	4	1 <sup>1</sup> / <sub>2</sub>	3/4	1 <sup>1</sup> / <sub>2</sub>	3/4	88	5	88	88	14	70
VFE-36-116	5	6	4	1 <sup>1</sup> / <sub>2</sub>	3/4	1 <sup>1</sup> / <sub>2</sub>	3/4	88	5	88	88	16	72

**NOTES:**

- 1 All dimensions and nozzle nominal pipe sizes are given in inches unless noted otherwise.
- 2 Operating charge at OPL is based on ammonia @ +0 F RT.
- 3 Nozzle connections are supplied as pipe stubs unless otherwise specified as a coupling (Cplg).
- 4 Couplings are ASME B16.11 Class 3000 "full" couplings.
- 5 **Nozzles are sized for R-717 and should not be used with other refrigerants (e.g. R-507).**
- 6 Use minimum 6 inch standoff on nameplate bracket.
- 7 All dimensions are subject to change; please consult factory for certified drawings.
- 8 Vessels are built in accordance with ASME Boiler & Pressure Vessel Code, Section VIII, Division 1.
- 9 Legs are equally spaced.

**Form 120-360 SED (2010-09)**  
Supersedes: NOTHING  
Subject to change without notice  
Published in USA • GUI

© 2010 Johnson Controls Inc. - ALL RIGHTS RESERVED



**JOHNSON CONTROLS**  
100 CV Avenue • P.O. Box 997  
Waynesboro, PA 17268-0997 USA  
Phone: 717-762-2121 • FAX: 717-762-8624  
[www.johnsoncontrols.com/frick](http://www.johnsoncontrols.com/frick)