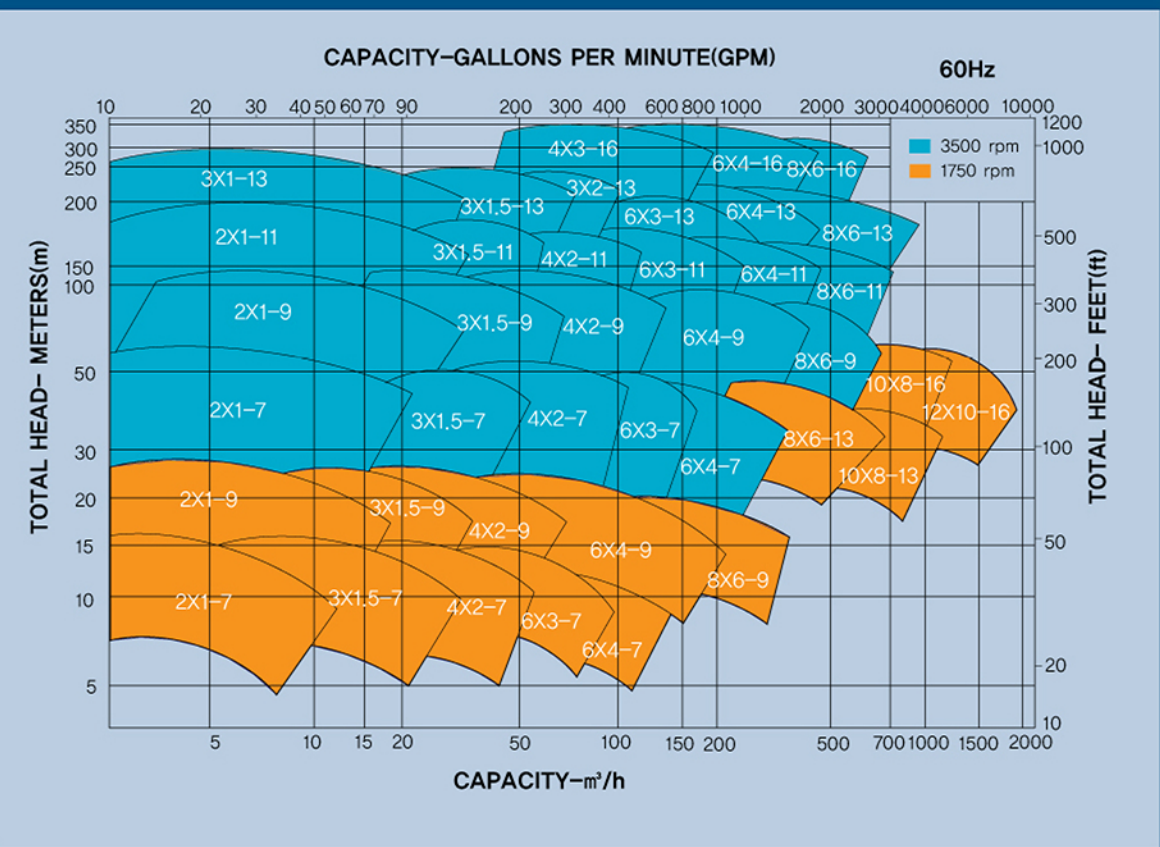
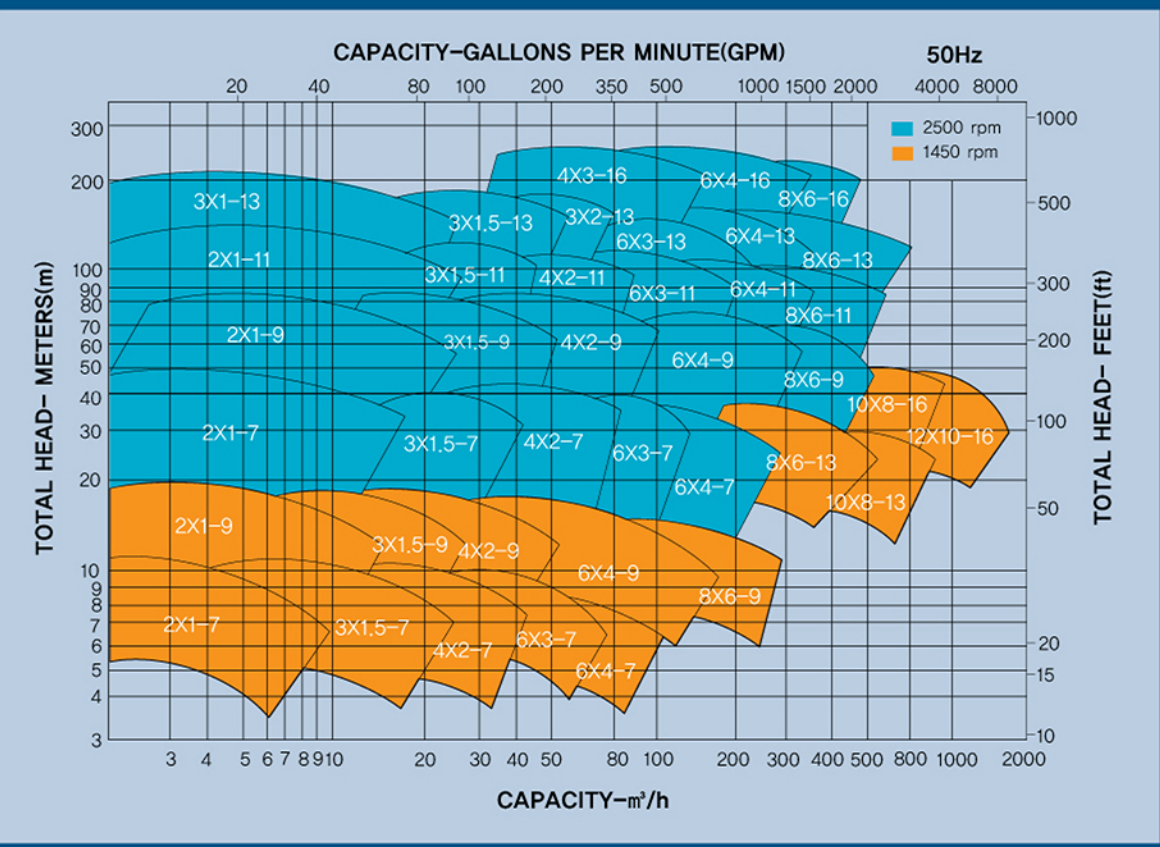


PUMP SELECTION GUIDE

3500/1750 RPM(60HZ)

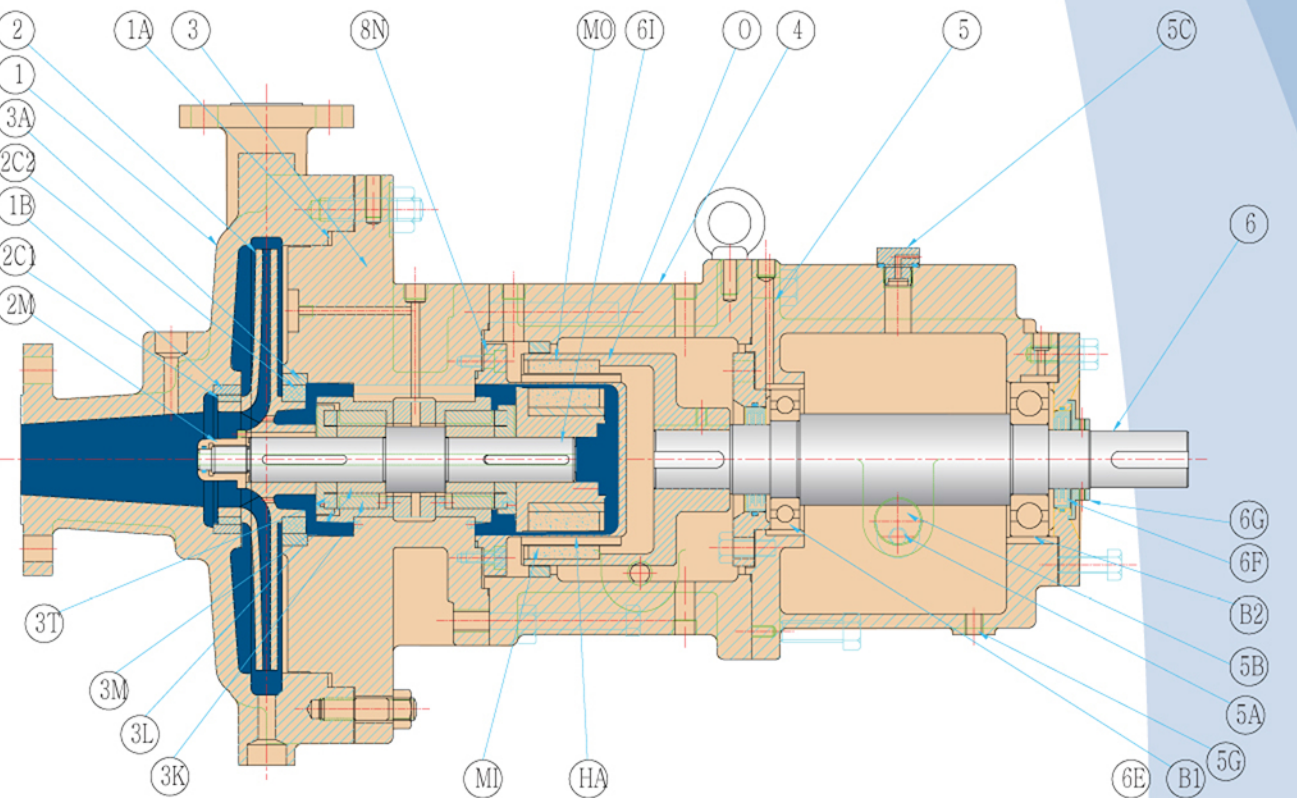


2500/1450 RPM(50HZ)



You need to discuss with our company if you use 200hp or more motor power.

SECTIONAL



NO	NAME OF PART	NO	NAME OF PART	NO	NAME OF PART	NO	NAME OF PART
8N	CONTAINMENT SHELL	5B	SIGHT GLASS	3K	MAIN BUSH	1A	GASKET(CASING)
6I	INNER SHAFT	5A	OILER	3A	COVER WEAR RING	1	CASING
6G	DEFLECTOR	5	BEARING FRAME	3	END COVER	O	OUTMAG SHELL
6F	LABRYNTH SEAL-OUT	4	ADAPTOR	2M	IMPELLER NUT	MO	OUTER MAGNETIC
6E	LABRYNTH SEAL-IN	3T	THRUST RING SHELL	2C2	IMPELLER WEAR RING(R)	MI	INNER MAGNETIC
6	SHAFT(DRIVE END)	3S	MAIN BUSH SHELL	2C1	IMPELLER WEAR RING(F)	MA	IN MAG CAN
5G	OIL DRAIN PLUG	3M	THRUST RING	2	IMPELLER	B2	OUTBOARD BEARING
5C	OIL CAP	3L	SLEEVE BEARING	1B	CASING WEAR RING	B1	INBOARD BEARING

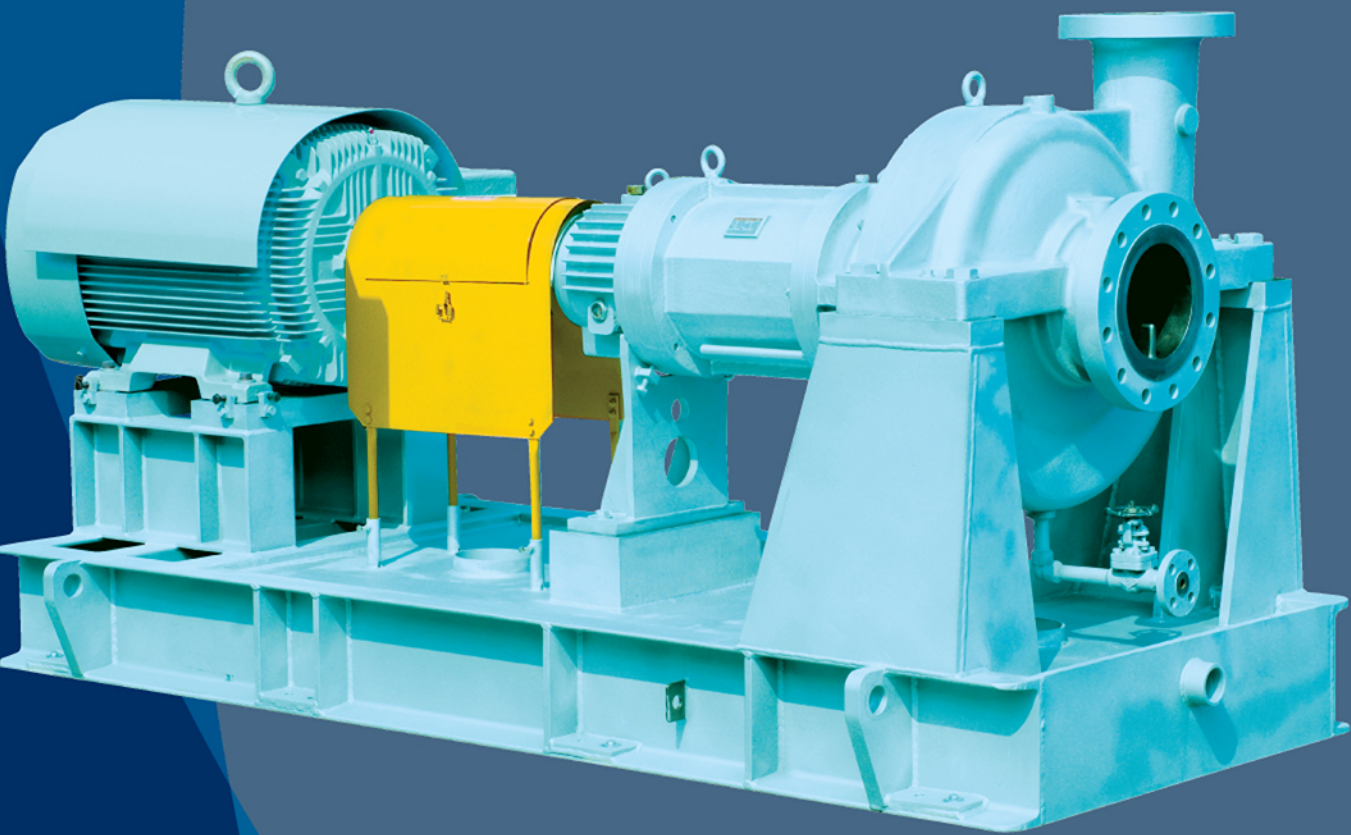
DONGYANG CHEMICAL PUMP CO.,LTD.

HEAD OFFICE & FACTORY 101-3, Moonbong-dong, Ilsandong-gu, Goyang-City, Kyungki-do, Korea T. (82)31-977-5161 F. (82)31-977-5226/7 www.dycp.co.kr
ULSAN SALES OFFICE T. (82)52-260-5225 F. (82)52-260-3618 YEosu SALES OFFICE T. (82)61-684-5161 F. (82)61-684-7022

* Contents in this leaflet are subject to change without prior notice.

API 685 1th ed. Magnetic Drive Process Pump(OH2)

TMP Series



API 685 1th ed. Magnetic Drive Process Pump(OH2)

Bulletin No. EX-16, Rev.0(2011.02)

TRUFLO

TMP SERIES

API 685 1th ed. Magnetic Drive Process Pump(OH2)

- Max.Capacity : 600m³/h (2600GPM)
- Max.Head : 340m (1120ft)
- Temperature : 300°C (10200°F)
- Allowed Pressure : 24kg/cm² (340psi)
- Power : 280kw (380HP)
- Material : DCI, WCB, CF8, CF8M, CD4M, CN7M, CA6NM, CF8M Etc.
- Conforms to API 685 for sealless pump
- Standard Sm2 Co17 magnet
- Design ensures safe, leak free operation
- Increased efficiency, Low running costs.
- Parts compatibility between the same pump group.
- No costly seal support systems to maintain

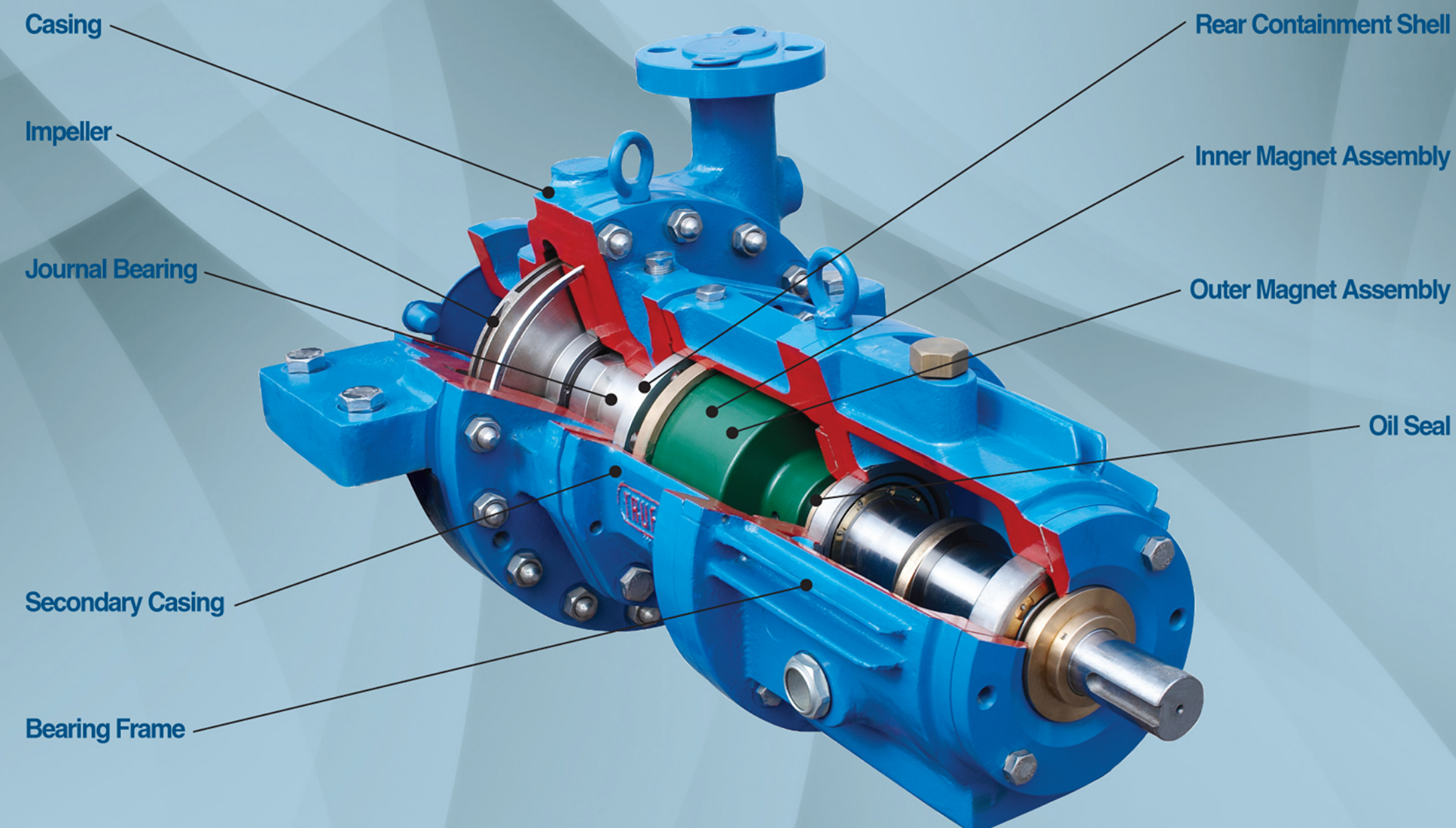
In recent year, laws and regulations for environment are getting more tough and severe. Therefore process industries has to protect leakage from equipment. Magnetic drive pump is the one of solutions. Magnetic drive pump has no dynamic seals in structure. That means there are no route to leak. Also, Magnetic drive pump has simple structure for maintenance. It has very low life cost than other types of pump.

TMP series of TRUFLO pump is designed to meet API 685 1st edition. This series has a broad range of size and materials. Also, TMP series has good interchangeability and good features for easy maintenance.

APPLICATION

- _ Refineries
- _ Liquid gas plants
- _ Chemical and petrochemical industries
- _ Refrigeration and heat engineering
- _ Power stations
- _ Tank installations
- _ Pharmaceutical industries
- _ Fibers industries

16. TMP serie



CASING

- Standard 300lb RF flanges.
- Tangential Discharge.

IMPELLER

- Fully enclosed type.
- Investment casting.

JOURNAL BEARING

- Standard material-Silicone carbide.

REAR CONTAINMENT SHELL

- Wide choice of material depend on application

INNER MAGNET ASSEMBLY

OUTER MAGNET ASSEMBLY

- Strong rare earth magnet(SM2C017)
- Maximum operating temperature:300°C

SAFETY DEVICE

- Protect rear containment shell damage by outter magnet in case of bearing failure.

SECONDARY CASING

- Secured liquid in case of primary casing failure.

OIL SEAL

- Special designed labyrinth type oil seal

BEARING FRAME

API 685 1th ed. Magnetic Drive Process Pump (OH2)